

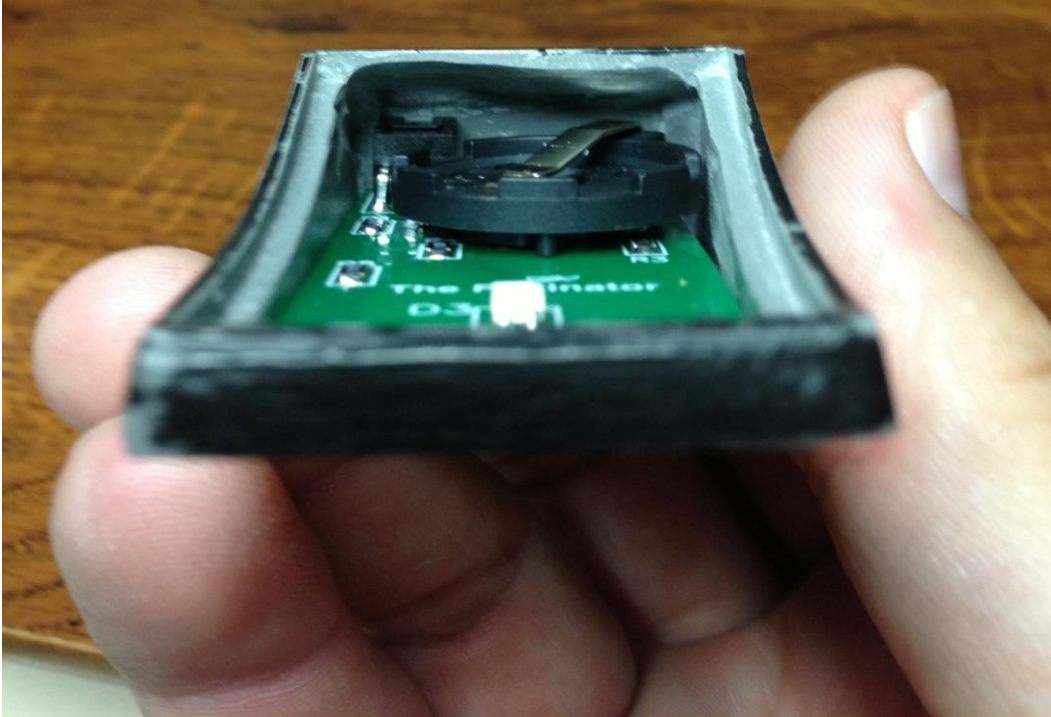
## Fettinator Industries Self-contained Rangefinder Light Kit

This kit uses a CR2025 coin cell battery. The kit does not require a hollow stalk for wires or an external battery, everything is contained on the light kit. This kit should fit Rf toppers made by AnimeFan (on The Dented Helmet) and toppers based off of the Master Replicas Boba Fett helmet rangefinder.

The self contained rangefinder light kit may require a little bit of sanding to the rangefinder topper. In the following pictures, you can see the area that will need to be sanded down to allow the tilt switch located on the board to fit inside the topper.



## Fettinator Industries Self-contained Rangefinder Light Kit

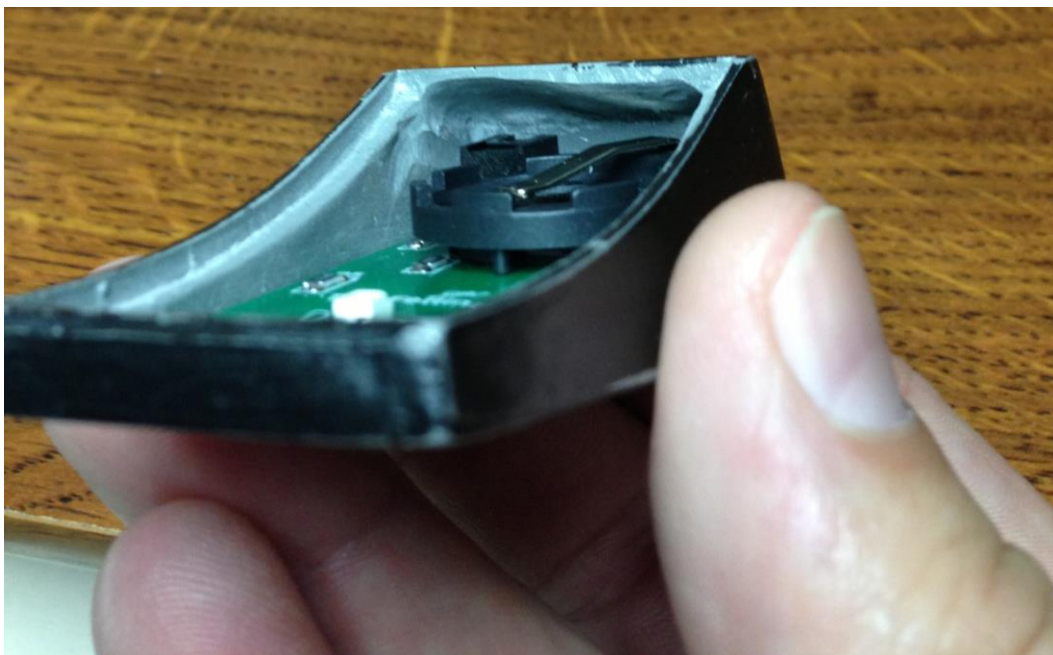


I now use a mercury tilt switch in place of the square black one shown in a few of the pictures.





## Fettinator Industries Self-contained Rangefinder Light Kit



## Fettinator Industries Self-contained Rangefinder Light Kit

Attaching the topper to the stalk can be done a couple of different ways. It can be glued to the stalk, and since the kit just pops in and there is easy access to the battery, gluing it in place shouldn't cause any issues.

The other way would be to use small screws to attach the topper to the stalk. This will require the stalk to have threaded holes in it that will allow the screws to tighten. Just make sure that the screws are in a spot that will not interfere with the battery holder or the tilt switch.

To keep the clear piece of the rangefinder in place, I use a small button magnet glued to the very end of the topper's inside (as seen in the pic below). Then I sanded down an area of the clear piece and glued a small metal washer to it. The magnet is strong enough to hold the clear piece in place. There is enough room in the bottom of the topper to fit 2 button magnets (the pic below is an older kit, I have since shrunk it a bit so there is a little more room at the bottom of the topper), and 2 magnets would definitely keep the piece in place.

